

## DALEY PARK AND GREENBELT RIPARIAN BUFFER: BEFORE AND AFTER



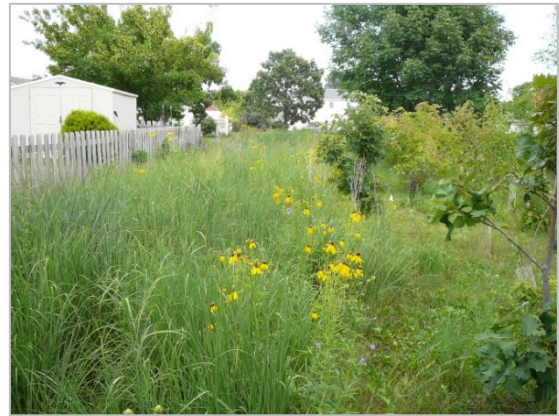
**Before**, south side of stream visible at left (2007)



**After**, south side with stream to left (2012)



**Before**, north side of stream (2008)



**After**, north side of stream (2012)



**After**, north side prairie area (2009)



**After**, north side, prairie area (2009)